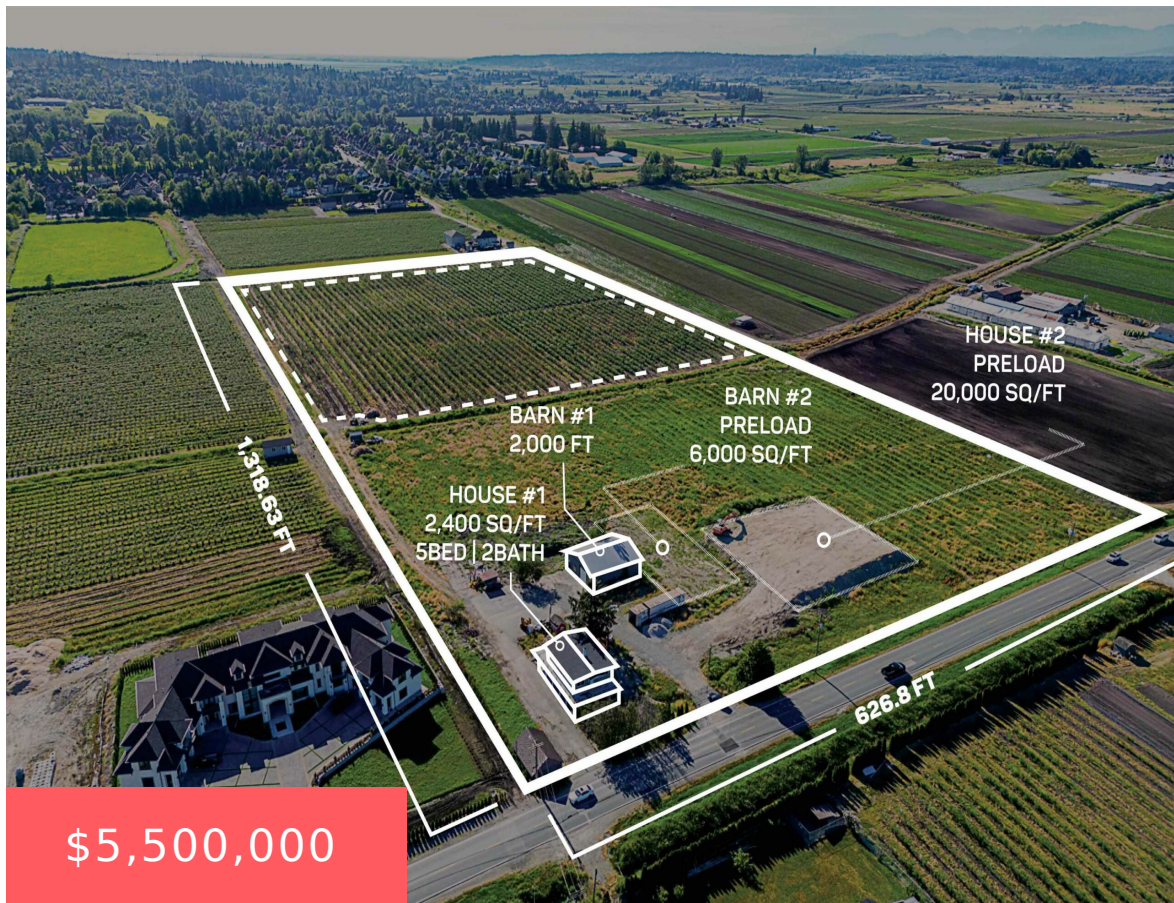


3511 168 ST #3511, SURREY, BC V3S 0L2, CANADA

https://www.soldbysandhu.com

3511 168 St #3511,  
Surrey, BC V3S 0L2,  
Canada



18.96 ACRES, HOUSE AND BLUEBERRY FARM! Fantastic location to build your dream home with access to all utilities. 20,000 sqft preloaded ready to build a new home and 6,000 sqft preloaded for a new building. The property has two 1,800 square feet houses. Current home is 2,400 sqft 5 bedrooms & 2 bathrooms that has [...]

- 5 beds
- 2 baths
- House with Acreage
- Active
- South Surrey White Rock, South Surrey White Rock, South Surrey White Rock sq ft



Building Details

Floor covering: 1200





# Amenities & Features

**Features:** Barn

