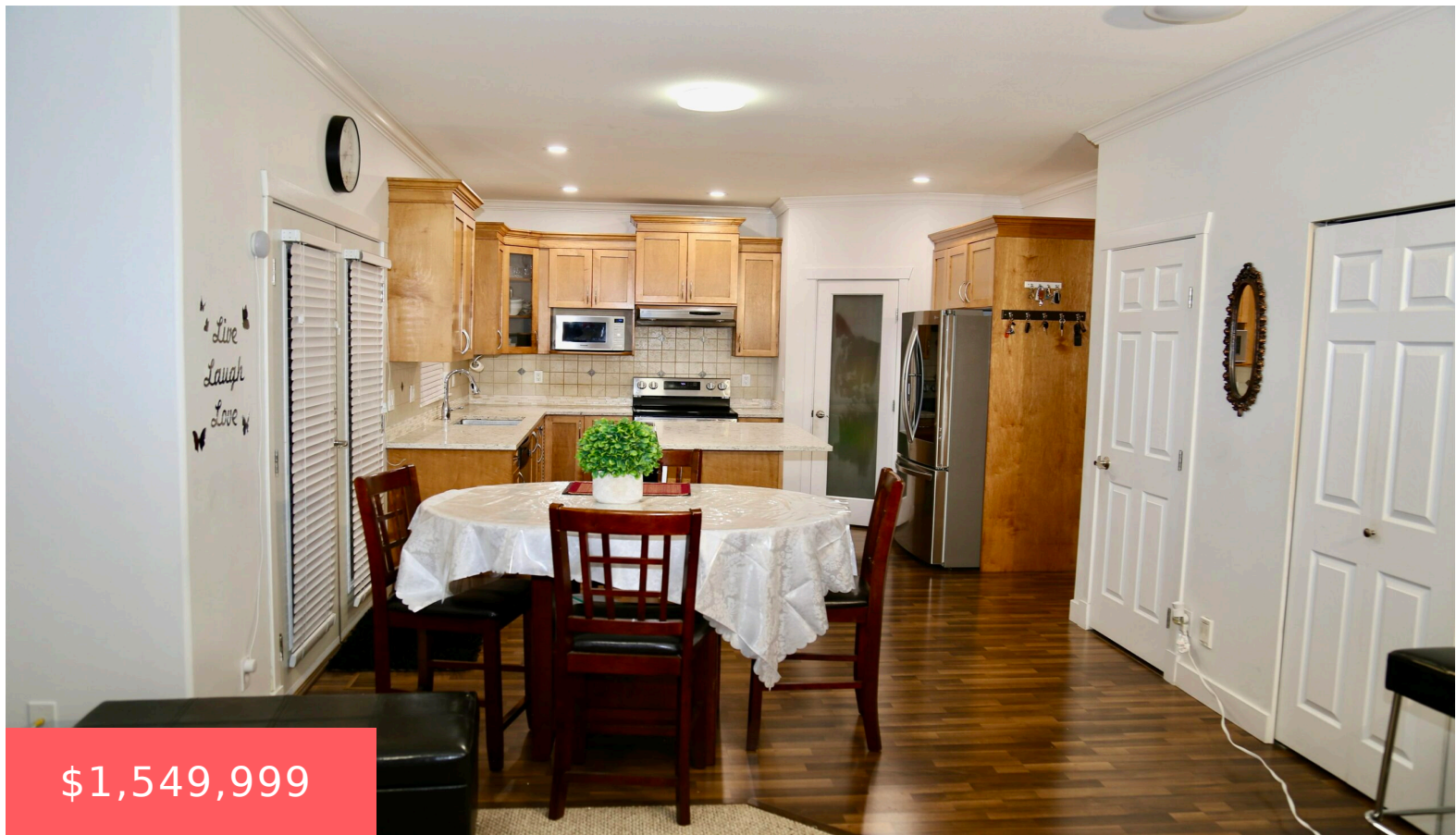


SURREY, SURREY, SURREY, BC, V3S 0Z2

<https://www.soldbyksandhu.com>

Surrey, Surrey,
Surrey, BC, V3S
0Z2



\$1,549,999

PERFECT CLOVERDALE FAMILY HOME IN POET'S WYND GREAT NEIGHBORHOOD. This 6Bdrm 4Bth is in prime central location walking distance to schools Cloverdale athletic park and all amenities. Traditional Living/Dining room with Large open kitchen Family room loads of windows for natural light leading to backyard with newer deck with covered glass roof. Kitchen features maple [...]

- 6 beds
- 4 baths
- House/Single Family, Residential Detached
- Active
- Cloverdale, Cloverdale, Cloverdale sq ft

Building Details

Floor covering: 983





Amenities & Features

Features: Garden

